

MOTOROLA



DIGITAL WIRELESS TELEPHONE



March 2000

Motorola Internal Use Only

56 of 72

The Motorola
V-series™ V2288
GSM 900/1800 MHz



Motorola V^{series}™ V2288

- The V2288 operates in GSM 900/1800 dual band technology
- New, chic design and comfortable contours
- Available in multiple housing colors: Bright Orange, Putty and Metallic Black
- Interchangeable PhoneWrap™ covers available in different colors and materials
- WAP microbrowser
- Large 96x64 graphics display
- FM Stereo Radio
- 11 individual ring styles
- Integrated headset jack for portable hands free operation
- Stub antenna
- Multi-language capable
- Caller ID
- SMS messaging
- A complete line of accessories, including rotating belt clip, standard travel charger, four headset options, vehicle power adapter, easy install hands free car kit and color PhoneWrap™ covers



March 2000

Motorola Internal Use Only

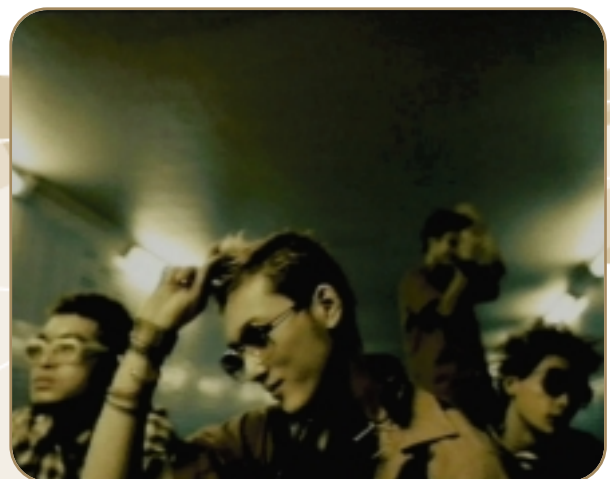
57 of 72

The Motorola
V^{series} V2288
GSM 900/1800 MHz



● The Motorola V.^{series™}

Motorola V. consumers choose communications devices to reflect a sense of who they are or who they aspire to be. They view communications devices as means to express their personal style as well as functional tools, and they are willing to pay for items that help them express themselves and symbolize their belonging to a particular group. However, the Motorola V. consumer is not solely motivated by the look of the device. The feature set must be comparable to the competition and contribute to the distinctiveness of the product.



March 2000

Motorola Internal Use Only

58 of 72

The Motorola
V.^{series™} V2288
GSM 900/1800 MHz



● Large, Easy To Read, Graphics Display

The phone features a large, 96x64 easy to read display offering 4 lines of text, 1 line of icons and 1 line of prompts.

● EFR/HR/FR CODEC

The speech CODEC is a key part of every digital mobile phone. It is the dictionary of sounds that translates the caller's voice into digital 1s or 0s for transmission, then reconverts to analog sound for the recipient to hear. The Full Rate (FR) CODEC uses the full complement of channel time allotted to a mobile. Enhanced Full Rate (EFR) CODEC is a more efficient speech encoder. Using the same single channel, the user benefits from a higher sound quality than has been available previously. Half Rate (HR) CODEC decodes digitized speech using half the bandwidth of a full rate codec, allowing network operators to enhance capacity during peak or emergency times.

● EGSM

Extended EGSM is a network supported feature that improves the network capacity by increasing the range of frequencies available on the network.

● Phase II USSD

Phase II USSD is a GSM service that allows high-speed bi-directional communication between the user and the GSM network. This service can be used to offer services to subscribers through their handsets. It provides an ideal mechanism to introduce new services and applications to GSM networks, particularly those that benefit from a "dialog" structure.

● Last 10 Calls

The Last 10 Calls feature will identify the last 10 calls made and received by the phone. This information can then be transferred to the SIM memory.

March 2000

Motorola Internal Use Only

59 of 72



The Motorola
V.^{series}™ V2288
GSM 900/1800 MHz

● SIM Application Toolkit™ - Class 2

SIM Application Toolkit™ is a value added service delivery mechanism that allows GSM operators to customize the services they offer their customers, from the occasional user who requests sports news and traffic alerts, to a high call time business user who receives the stock share alerts and checks flight times. Operators can now create their own value added services menu quickly and easily in the phone. The customized menu will appear as one of the first items when the Menu key is pressed and may be updated over the air with new services when customers request them.

● Stereo Headset Accessory

The stereo headset accessory allows the user to listen to the phone's integrated FM stereo radio, and place, answer and end calls while leaving both hands free. This accessory may also be used as an economic in-car hands-free solution.

● Phone book Look-up for SMS-MO Messages

This feature will allow users to access names and telephone numbers from their phone book when sending SMS messages.

● Reply to SMS Message Option

With this feature the user may reply directly to a received SMS message without having to enter the phone number of the recipient.

● Stop Call Alert

This feature enables the user to stop his phone from ringing simply by pressing one of the side volume buttons. This stops the alert but does not answer the call.

● Small SIM

The phone utilizes a small SIM card, which is positioned in the back housing, under the batteries. A sliding, flip-up door configuration is used to allow for easy insertion and removal.

● Access Internet

This feature allows you to access the mobile internet services available from your service provider. Financial, sports, travel and entertainment information can now be accessed via your mobile phone while on the go – quickly and wirelessly!

Note: If mobile internet access is not set up automatically by the service provider, the user can manually set up access by following the detailed set of instructions located in the User Manual.

March 2000

Motorola Internal Use Only

60 of 72



The Motorola
V^{series}™ V2288
GSM 900/1800 MHz

● FM Radio

The Motorola V.^{series}™ V2288 phones include an integrated FM Radio, which the user can listen to through the stereo headset accessory. With a touch of the dedicated side radio button, the phone will switch to radio mode and the user can scan stations via the keypad and adjust volume using the dedicated side volume buttons. Once a station has been selected, it will appear in the phone's display.

● Customizable Quick Access Menu

This feature allows the user to place 9 of their most frequently used features into their own personal menu so that they can be accessed with just two key presses. The user can choose from the following set of features:

- Find by name
- Add to SIM
- Access Internet
- Battery meter
- Message editor
- Phone mute on or off
- Read messages
- Ring volume
- Ringer on or off
- Divert voice calls
- Find by location
- Call voicemail
- Phone lock now
- Outgoing messages
- Last calls received

- Last call charge
- Credit remaining
- Restrict my ID
- Find new network*
- Adjust contrast

Colors

The Motorola V.^{series}™ V2288 phones will be available in 3 different colors – Putty, Metallic Black and Bright Orange. Two protective Soft PhoneWrap™ covers will come packaged with the V2288 phone. See [Ordering Information](#) for more details.

** Availability depends on the type and settings of the SIM card, and/or your subscription to this feature.*

March 2000

Motorola Internal Use Only

61 of 72

The Motorola
V.^{series}™ V2288
GSM 900/1800 MHz



User Interface

- **Display Type**
 - Illuminated 96 x 64 graphics display
 - Up to 4 lines of text
 - LCD contrast control
- **Display Icons**
 - Signal strength
 - Off-hook
 - Roaming
 - Home zone
 - Text message waiting
 - Voice message waiting
 - Ringer alert on
 - Battery meter
- **Dedicated Control Buttons**
 - Voice mail key
 - Quick access key
 - Volume buttons
- **Languages**
 - 16 Western European languages
 - 11 Eastern European languages
 - Middle East language support (prompts only)
 - Asian language support
 - Automatic language selection determined by SIM card
- **Alert Types**
 - 11 ringer/SMS tones
 - Network programmable ringer tone
- **Postscripting**
 - Short cut number entry system
- **Illuminated Keypad**
- **Customizable Quick Access Menu**

Telephone Directories

- **Last Ten Calls:**
 - Last calls made
 - Last calls received / missed
 - Return call
- **SIM Card Based Directories:**
 - Phone book (up to 155 names & numbers depending on SIM)
 - Fixed dialling list (up to 40 names & numbers)
 - Service dialling list

Network Related

- **Dual Band GSM 900/1800**
- **EGSM**
- **SIM Application Toolkit Support (Class 2)**
- **FR/EFR/HR Enhanced Voice Quality**
- **Voice Encryption**
- **Phase II Unstructured Supplementary Service Data (USSD)**

March 2000

Motorola Internal Use Only

62 of 72

The Motorola
V_{series}™ V2288
GSM 900/1800 MHz



Call Control

- **Call Diverting**
- **Call Barring**
- **Hold Call**
- **Call Waiting**
- **Calling Line Identification** (name displayed if in phone book)
- **Missed Call Indicator**
- **International Access Key Sequence**
- **User Call Rejection**
- **Conference Calling**
- **Call Transfer**
- **Mute Call**
- **Automatic Redial - on busy**
- **Call Cost Control**
 - Advice of charge (charging and information)
 - Programmable audible call timers
 - Display call timers or charge meters
- **Abbreviated Dialing**
 - Turbo Dial™ keys
 - Speed dialing

Security

- **Phone Lock**
 - manual
 - automatic
- **SIM Card Lock**
 - SIM PIN
 - SIM PIN 2
- **Keypad Lock**

Non-Voice Features

- **Text Messaging**
 - Send short messages
 - Receive short messages
 - Cell broadcast
 - Short message reply
 - Phone book access
- **Data**
 - WAP 1.1 compliant microbrowser

Advanced Features

- **Integrated Headset Jack**
- **HATIS Support**
- **Battery Saving Mode**
- **FM Stereo Radio**
- **Microbrowser**

NOTE: The features detailed here may be subject to the following:- Network, subscription, SIM card or service provider dependent. Not available in all areas.

March 2000

Motorola Internal Use Only

63 of 72

The Motorola
V_{series}™ V2288
GSM 900/1800 MHz





Fixed Antenna

Earpiece

High quality sound and a comfortable fit.

Large, easy to read graphics display

Easy to read 96 x 64 display with 4 lines of text, 1 line of icons and 1 line of prompts, plus a contrast control option.

FM Radio Button

Allows the user to start and stop the FM stereo radio. The display will show the current channel.

Keypad

Large, well spaced, tactile keys ensure accuracy and speed.

Small Size SIM

The small SIM fits easily behind the batteries in a flip-up door configuration which allows for easy insertion and removal.

Connector Port

Gives you the ability to charge your phone using the standard travel charger and the vehicle power adapter.

Volume Buttons

Adjust keypad, earpiece, FM stereo radio and ringer volumes.

Headset Port

For connection to portable, handsfree headset.

March 2000

Motorola Internal Use Only

64 of 72

The Motorola
V.^{series}™ V2288
GSM 900/1800 MHz



Standard Package*

	Size (cc)	Weight (g)	Talk time (mins)	Standby time (hrs)
Motorola V.^{series™} V2288	136	150	210	135
Siemens C25	118	128	109	70
Nokia 5110	143	170	175	119
Nokia 3210	107	155	123	91
Philips Savvy	135	146	120	130
Alcatel OT Max	160	160	225	120

Best Performance*

	Size (cc)	Weight (g)	Talk time (mins)	Standby time (hrs)
Motorola V.^{series™} V2288	136	150	210	135
Siemens C25	118	128	109	70
Nokia 5110	143	137	300-480	100-450
Nokia 3210	107	155	123	91
Philips Savvy	135	148	210-420	240-460
Alcatel OT Max	160	160	225	120

Note: Times listed are approximate and depend on functions selected, signal strength and network status.

†Data not available.

*Information reflects manufacturer's published numbers.

March 2000

Motorola Internal Use Only

65 of 72

The Motorola
V.^{series™} V2288
GSM 900/1800 MHz



Strengths

Motorola V^{series™} V2288

Multiple housing colors
Interchangeable color PhoneWrap™ covers
Large 96 x 64 graphics display
FM stereo radio
WAP microbrowser
Integrated headset jack

Nokia 5110

Large full graphics display
Metallic housing colors
Interchangeable front color housings
30 ring tones
Calculator
3 game options
Data capability

Nokia 3210

Large full graphics display
Many housing color and design options
Xpress on front and back covers
40 ring tones
PIM functionality (calendar, calculator)
Integrated antenna
Tegic T9 predictive text entry
3 game options
Data capability

Philips Savvy

Color housing options
Voice recognition
Vibrator alert function
25 emotion icons to send with SMS
PIM functionality (calculator, stopwatch, Biorythm calendar)
Compass key providing one button navigation

Alcatel OT Max

Color and material housing options
Alkaline battery option
Integrated speaker phone
Data capability

Siemens C25

Multiple housing colors
Small and lightweight for its class
20 ring tones, 1 self composable

Weaknesses

Motorola V^{series™} V2288

No games
11 ringer tones
No ability to download or compose ringer tones
No PIM functionality

Nokia 5110

No FM radio
No web browser

Nokia 3210

No web browser
No FM radio

Philips Savvy

No web browser
No FM radio
No games

Alcatel OT Max

15 ring tones
No web browser
No FM radio
No games

Siemens C25

No FM radio
Small dot matrix display
No web browser
No games

March 2000

Motorola Internal Use Only

66 of 72

The Motorola
V^{series™} V2288
GSM 900/1800 MHz



PERFORMANCE OVERVIEW

Model	Motorola V. ^{series™} V2288
Battery technology	3 NiMH AAA Long Cells
Battery capacity (mAh)	700
Battery part number	See accessories information
Volume (cc) Phone & battery	136
Volume (ci) Phone & battery	8.29
Weight (g) Phone & battery	150
Weight (oz) Phone & battery	5.3
Size (mm) Phone & battery	137 x 50 x 29
Size (inches) Phone & battery	5.4 x 2 x 1.14
Digital Talk time (mins)* (up to)	140 - 210
Digital Standby time (hours)* (up to)	100 - 135
Charge time with Standard Travel Charger (hours)	4 - 6

*Note: *Times listed are approximate and depend on functions selected, signal strength and network status.*

March 2000

Motorola Internal Use Only

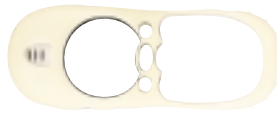
67 of 72

The Motorola
V.^{series™} V2288
GSM 900/1800 MHz



Soft PhoneWrap™ cover - Glowlight

SYN8472A - Bulk
COV2200 - EMEA Retail



PhoneWrap™ cover - Glass

SYN8410A - Bulk
COV2403 - EMEA Retail



Soft PhoneWrap™ cover - Vermilion

SYN8466A - Bulk
COV2202 - EMEA Retail



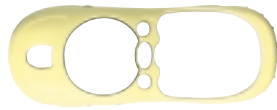
PhoneWrap™ cover - Saffron

SYN8411A - Bulk



Soft PhoneWrap™ cover - Honeydew

SYN8468A



PhoneWrap™ cover - Stone

SYN8412A - Bulk
COV2400 - EMEA Retail



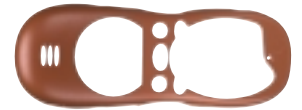
Soft PhoneWrap™ cover - Safety

SYN8469A - Bulk
COV2204 - EMEA Retail



PhoneWrap™ cover - Mango

SYN8578A - Bulk
COV2405 - EMEA Retail



Soft PhoneWrap™ cover - Electric Lime

SYN8470A - Bulk
COV2203 - EMEA Retail



PhoneWrap™ cover - Canary

SYN8579A - Bulk
COV2408 - EMEA Retail



Soft PhoneWrap™ cover - Marlin

SYN8467A - Bulk
COV2205 - EMEA Retail



PhoneWrap™ cover - Azure

SYN8580A - Bulk
COV2406 - EMEA Retail



Soft PhoneWrap™ cover - Hyacinth Blue

SYN8471A - Bulk
COV2201 - EMEA Retail



PhoneWrap™ cover - Ruby

SYN8581A - Bulk
COV2407 - EMEA Retail



PhoneWrap™ cover - Quartz

SYN8408A - Bulk
COV2402 - EMEA Retail



PhoneWrap™ cover - Brick

SYN8577A - Bulk
COV2404 - EMEA Retail



PhoneWrap™ cover - Wave

SYN8409A - Bulk
COV2401 - EMEA Retail



March 2000

Motorola Internal Use Only

68 of 72

The Motorola
V_{series}™ V2288
GSM 900/1800 MHz



Travel Chargers

- Available in standard charging model
- Charges the phone's battery in 4 to 6 hours
- Provides power to phone while charging
- Helps eliminate the need to carry bulky accessories when travelling

Argentina	SPN4678A
Australia	SPN4683A
Brazil 220	SPN4679A
Brazil 100	SPN4707A
China	SPN4677A
Euro 220	SPN4682A
India	SPN4684A
U.K.	SPN4680A
U.S.	SPN4681A*



*as shown in photo

Batteries

Phone requires three 700 mAh NiMH AAA long batteries

- English, Spanish, Portuguese
- English, French
- Chinese

SNN5542*
SNN5518
SNN5541



- V.series™ Battery Door Cover (Putty)
- V.series™ Battery Door Cover (Metallic Black)
- V.series™ Battery Door Cover (Bright Orange)

SHN7476A
SHN7477A
to come

*as shown in photo

Power Packs for EMEA Markets only Chargers and Batteries

- Power Pack 700 NiMH and Charger Euro
- Power Pack 700 NiMH and Charger UK

PAK2070
PAK2071

March 2000

Motorola Internal Use Only

69 of 72

The Motorola
V.series™ V2288
GSM 900/1800 MHz



Headset Options

		<u>EMEA Retail</u>
Hands-Free Headset (blue pouch)	SYN8390A	HSK9000
Over-the-Ear Style Hands-Free Headset	SYN8146A	HSK9500
Retractable Hands-Free Headset	SYN8284A*	HSK9300
Stereo Headset	SYN8086	HSK2000



*as shown in photo

Belt Clip Options

- Allows you to attach/detach your phone to your belt easily

		<u>EMEA Retail</u>
Rotating Universal Belt Clip	SYN7158A	CCA2050
for use with the V. ^{series™} Phone Clip	SYN8524A	CCA2050

Vehicle Power Adapter

- Charges the phone's battery
- Provides power to the phone from the vehicle's battery
- Overrides the phone's battery when the phone is in use to preserve the charge

		<u>EMEA Retail</u>
Vehicle Power Adapter	SYN8087A	CLA2000

March 2000

Motorola Internal Use Only

70 of 72

The Motorola
V.^{series™} V2288
GSM 900/1800 MHz



Easy Install Hands-Free Car Kit

- Full hands-free operation, allowing you to safely operate your phone while driving

		<u>EMEA Retail</u>
Easy Install Hands-Free Car Kit	SYN8o88A	HFK2o0oA
Easy Install Remote Microphone		MIC7o0o
Basic Car Kit with Headset (no holder)		HFK21o0

In-Vehicle Clip Options

- Offers convenient in-vehicle storage
- Compatible with V.^{series™} belt clip-on mechanisms

In-Vehicle Clip 2000	SYN8525A
In-Vehicle Alligator Clip 2000	SYN8526A

March 2000

Motorola Internal Use Only

71 of 72

The Motorola
V.^{series™} V2288
GSM 900/1800 MHz



Additional Accessories

Neoprene Case - Silver
SYN8443
CCA2250 - EMEA Retail

Neoprene Case - Black
SYN8449



Neoprene Case - Blue
SYN8442



Leather Case
SYN8441
CCA2150 - EMEA Retail

BodyGlove Body Sling
- Black
SYN8437A



BodyGlove Body Sling
- Blue
SYN8438A



BodyGlove Body Sling
- Purple
SYN8439A



BodyGlove Body Sling
- Orange
SYN8440A



March 2000

Motorola Internal Use Only

72 of 72

The Motorola
V_{series}™ V2288
GSM 900/1800 MHz

